



# REACT Tajikistan

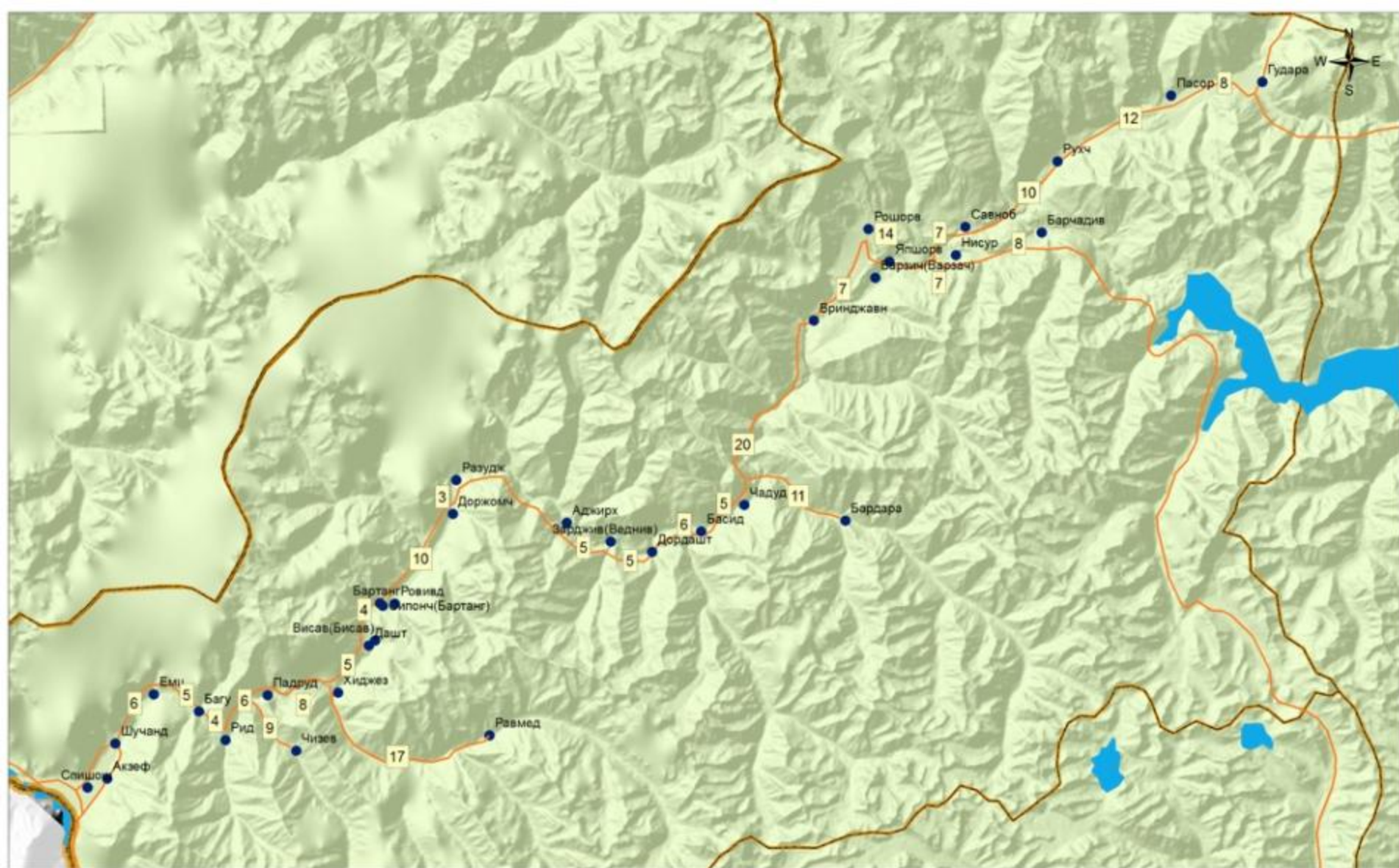


## Murgab Earthquake Assessment 17 - 20 December 2015



# Objectives

- Identify immediate, medium term and longer term relief and recovery needs
- Provide information sufficient to define relief and recovery assistance levels
- Identify other issues which may impact the relief and recovery process



## ВОДИИ БАРТАНГ НОҲИЯИ РУШОН

ФОКУС, Тоҷикистон  
Мащаб: 1:132,348

**Аломатҳои шартӣ**

- Деҳаҳо
- Масофа байни деҳаҳо
- Марзи ноҳия

- Қўлҳо
- Роҳҳо

# Team and Activities

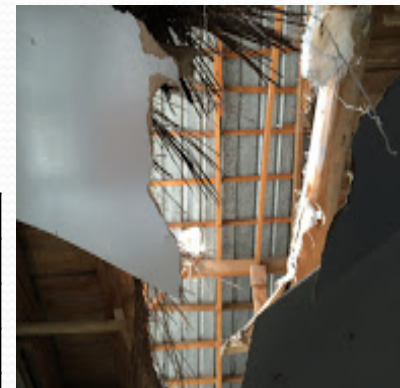


- Team from OCHA, UNDP, UNICEF, WFP, Focus Humanitarian Assistance
- Visits to Rushan and Bartang Valley
- Meetings with government officials, displaced in Rushan and disaster survivors in Bartang
- Included information from Government, FOCUS assessments of upper Bartang Valley and from other humanitarian partners (IOM, TRC, etc.)

# Disaster Overview

- 7 Dec 2016 @ 1250 local time; 7.2 on the Richter scale.
- Epicenter 95 km west of Murgab; estimated 10 km north of Lake Suarez
- Slightly over 4,000 directly affected, including 500+ displaced to Rushan
- Most affected area: Upper Bartang Valley

Sector	Damage Type and Quantity	
	Housing	Destroyed
Damaged		643
Schools	Destroyed	3
	Damaged	17
Health Facilities	Destroyed	1
	Damaged	5
Hydro-power stations	Damaged	1
Public Facilities: government offices, libraries, cultural centers	Destroyed	1
	Damaged	6
Telecommunications – fiber optic lines	Damaged	5.4 km
Irrigation canals	Damaged	1,122 metes
Livestock	Killed	212



# Response To Date Overview

## Government

- Opening roads
- Food & NFIs – 90 MT (helicopter)
- Coal – 30 MT
- Food and NFIs in Rushan

## Local Population

- Hot meals
- Bedding
- Family hosting
- Unoccupied houses
- Clothes/NFIs
- Washing facilities

## Humanitarian Community

- Food – WFP (Rushan)
- NFIs – FOCUS, Red Crescent
- Hygiene kits – UNICEF
- Coal (300 MT) – OCHA/UNDP
- Fuel (1 MT)- IOM



# Immediate Needs

## To the end of December

### Rushan Displaced

- Winter clothes and underwear and shoes
- Bedding
- Infant formula
- Washing facilities
- Psychosocial support
- Fire extinguishers
- Stoves and Fuel
- Personal hygiene materials
- Cooking facilities and equipment

### Bartang Valley

- Road and Bridge Repair
- Winter clothes, underwear and shoes
- Bedding
- Shelter and stoves
- Kerosene
- Psychosocial support
- Personal hygiene materials
- Repairing hydroelectric facilities

# Sustained Relief Needs

## January to May 2016

### Rushan Displaced

- Food
- Upgrading Communal facilities
- Asset transfer
- Employment
- School supplies
- Heating support to boarding school
- Improved local waste management

### Bartang Valley

- Winter road access
- Fuel (coal)
- Food
- Extending loan repayments
- Repairs to Public Buildings



# Relief to Recovery

- **Planning Recovery**
- **Recovery Funding**
- **Planning Rebuilding/Relocation**
- **Risk Reduction**
- **Building Assets/Restoring Livelihoods**

# Key Actions Moving Forward

- Develop common distribution plan coordinated with the Government
- Conduct more in depth assessment – project design data
- Coordinate logistics over next 5 months
- Develop a resource mobilization strategy
- Assure local relief to recovery coordination



# Outstanding Challenges

- Logistics
- Assistance distribution process
- Funding

# Murgab Earthquake Assessment 17 - 20 December 2015